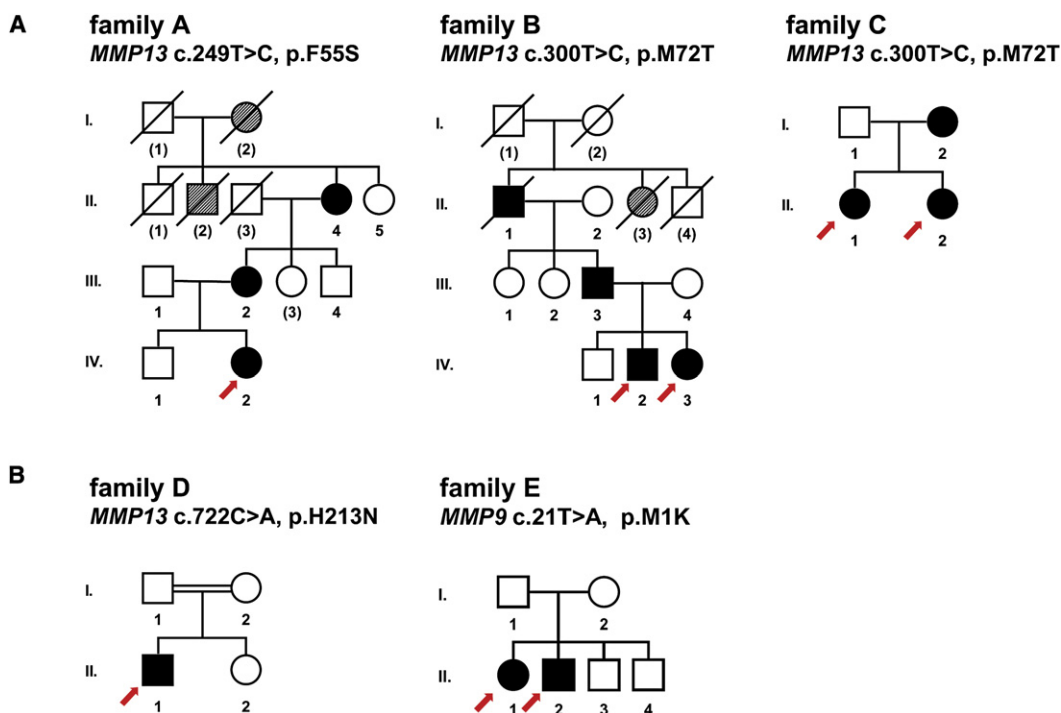


# Mutations in *MMP9* and *MMP13* Determine the Mode of Inheritance and the Clinical Spectrum of Metaphyseal Anadysplasia

Ekkehart Lausch,\* Romy Keppler, Katja Hilbert, Valerie Cormier-Daire, Sarah Nikkel, Gen Nishimura, Sheila Unger, Jürgen Spranger, Andrea Superti-Furga, and Bernhard Zabel

(The American Journal of Human Genetics 85, 168–178; August 2009)

Due to a miscommunication, family E in Figure 2B was depicted as consanguineous. Although the families of the parents originate over generations from a confined geographic region, it is now clear that they are not related. The pedigree of Figure 2B has been corrected to reflect this information.



\*Correspondence: ekkehart.lausch@uniklinik-freiburg.de

DOI 10.1016/j.ajhg.2009.08.012. ©2009 by The American Society of Human Genetics. All rights reserved.